

**Fire-Rated Glass Ceramic**  
**Fire-Rating: 20-90 Minutes**

FireLite is a 3/16" (5 mm) thick fire-rated glazing material. It is listed for use in non-impact safety-rated locations such as transoms and borrowed lites.

**FEATURES**

- ultraHD® Technology for improved surface quality, clarity and color
- Fire-rated for up to 90 minutes with required hose stream test
- Clear and wireless glass ceramic
- Available in two surface grades: Premium and Standard
- Fits in Fireframes® Designer Series frames from TGP, or standard fire-rated frames
- Withstands thermal shock
- Large sizes available
- May be lightly sandblasted or etched on one side without affecting fire rating
- May be insulated (see FireLite IGU fact sheet)

**Notes:**

1. This product is not a barrier to radiant heat, as it does not meet test standards ASTM E119 or UL 263. If your jurisdiction requires a "barrier to heat" product, please contact TGP regarding Pilkington Pyrostop®.
2. FireLite is not an impact safety-rated product and should not be specified as such. However, TGP does offer FireLite Plus® and FireLite® NT which carry both fire and impact safety ratings. Please contact TGP for more details.

**SURFACE GRADES**

**Standard Grade** - Polished for a surface quality that is comparable to alternative fire-rated ceramics marketed as having a premium finish.

**Premium Grade** - Finish ground and polished on both surfaces to provide superior surface quality, improving overall clarity and providing a surface that is unmatched by alternative products.

**LISTINGS/STANDARDS**

Classified and labeled by Underwriters Laboratories, Inc.® and Underwriters Laboratories of Canada. File number for labeled fire-rated assemblies is R13377. Tests performed in accordance with:

UL 9	NFPA 80	CAN4 S-104	MEA 290-90-M-6
UL 10B	NFPA 257	CAN4 S-106	LARR 25798
UL 10C			

**MAXIMUM EXPOSED AREA**

RATING	ASSEMBLY	MAX. EXPOSED AREA	MAX. WIDTH OF EXPOSED GLAZING	OR	MAX. HEIGHT OF EXPOSED GLAZING
20 to 60 min.	OTHER THAN DOORS	3,325 in <sup>2</sup> / 23.09 ft <sup>2</sup> (2.15 m <sup>2</sup> )	95" (2,413 mm)		95" (2,413 mm)
90 min.	OTHER THAN DOORS	2,627 in <sup>2</sup> / 18.24 ft <sup>2</sup> (1.69 m <sup>2</sup> )	56-1/2" (1,435 mm)		56-1/2" (1,435 mm)

Check with frame manufacturer for maximum tested glass sizes and required stop height.

**Note:** Individual lite sizes cannot exceed "Max. Exposed Area" shown above.



BIM 3D Model Available

**ultraHD**  
TECHNOLOGY



UL Classified & Labeled



Fire-Rated



Hose Stream Tested



Positive Pressure Tested

## MAXIMUM SHEET SIZE

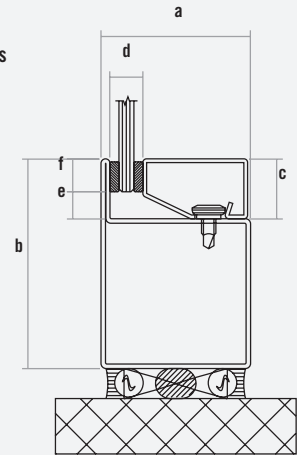
SURFACE FINISH	Premium	Standard	Obscure
	48" x 96" (1.21 m x 2.43 m)	48" x 96" (1.21 m x 2.43 m)	36" x 96" (.91 m x 2.43m)

## GENERAL CHARACTERISTICS

THICKNESS:	3/16" (5 mm) overall
WEIGHT:	2.56 lb / ft <sup>2</sup> (12.5 kg / m <sup>2</sup> )
APPROX. VISIBLE TRANSMISSION:	88%
APPROX. VISIBLE REFLECTION:	9%
HARDNESS (VICKER'S SCALE):	700
FIRE RATING:	20 to 90 minutes
IMPACT SAFETY RATING:	None
STC RATING:	35

### Detail based on use of Fireframes Designer Series narrow profile framing

Glazing Thickness:	3/16" – 1" (5 mm - 25.4 mm)
a. Frame width:	2" (51 mm)
b. Frame height:	2-3/4" (70 mm)
c. Stop height:	3/4" (19 mm)
d. Pocket width:	1/2" – 1-1/4" (12.7 mm x 31.8 mm)
e. Edge clearance:	1/4" (6.4 mm)
f. Bite:	1/2" (12.7 mm)



## LABELING

Each piece of FireLite shall be permanently labeled with the FireLite logo, UL logo and fire rating.

## INSTALLATION

FireLite shall be glazed into the appropriate fire-rated framing with an approved glazing compound (pure silicone, closed cell PVC tape or DAP 33 putty) as supplied by the installer. For 90 minute ratings that exceed 1,393 in<sup>2</sup> (.8987 m<sup>2</sup>) FireLite shall be glazed with fire-rated glazing tape as supplied by TGP.

Inspect each piece of FireLite immediately before installation and eliminate any with observable edge damage or face imperfections. As with any glass produced by the "roll out" method, individual pieces of FireLite may contain minimal variations in thickness. Occasionally, process marks and small inclusions or seeds (bubbles, knots or crystals) may be apparent. However, since they do not generally impair the transparency or affect the technical performance of the glass, they do not represent cause for rejection.

## STORAGE & HANDLING

FireLite must be handled with care during transportation, storage, inspection and installation. Store in a dry place.

## FAMILY OF PRODUCTS

TGP offers a complete family of products for all your fire-rated glazing needs, ranging from 20 minute to 3 hour applications. More information is available online at [fireglass.com](http://fireglass.com).