

Fire-Rated, Wired Glass
Fire-Rating: 45 Minutes

WireLite® is a 17/64”(6.8 mm) thick fire-rated glazing material composed of wired glass. It is listed for use in openings that do not require an impact safety rating.

FEATURES

- Fire-rated for up to 45 minutes with required hose stream test
- Fits in Fireframes® Designer Series from TGP, or standard fire-rated frames
- Withstands thermal shock
- May be lightly sandblasted or etched on one side without affecting fire rating
- Available as an insulated glass unit
- Available in Diamond Clear, 3/4” pattern (19 mm) and Georgian Clear, 1/2” pattern (12.7 mm)

Note: This product is not a barrier to radiant heat, as it does not meet test standards ASTM E119 or UL 263. If your jurisdiction requires a “barrier to heat” product, please contact TGP regarding Pilkington Pyrostop®.

LISTINGS/STANDARDS






Classified and labeled by Underwriters Laboratories, Inc.® and Underwriters Laboratories of Canada. File number for labeled fire-rated assemblies is R13377. Tests performed in accordance with:

UL 9	NFPA 257	CAN/ULC-S104	LARR 25798
UL 10B		CAN/ULC-S106	
UL 10C			

MAXIMUM EXPOSED AREA

RATING	ASSEMBLY	MAX. EXPOSED AREA	MAX. WIDTH OF EXPOSED GLAZING	OR	MAX. HEIGHT OF EXPOSED GLAZING
STANDARD SIZES					
45 min.	OTHER THAN DOORS	1,296 in ² / 9 ft ² (.84 m ²)	54" (1,372 mm)		54" (1,372 mm)
SIZES WHEN GLAZED WITH PEMKO FG3000™					
45 min.	OTHER THAN DOORS	4,608 in ² / 32 ft ² (2.97 m ²)	100" (2,540 mm)		100" (2,540 mm)

Note: Individual lite sizes cannot exceed “Max. Exposed Area” shown above.

-  BIM 3D Model Available
-  UL Classified & Labeled
-  Fire-Rated
-  Hose Stream Tested
-  Positive Pressure Tested

MAXIMUM SHEET SIZE

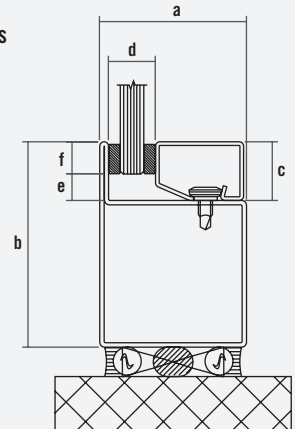
SURFACE FINISH	Diamond	Georgian
	58" x 100" (1.47 m x 2.54 m)	58" x 100" (1.47 m x 2.54 m)

GENERAL CHARACTERISTICS

THICKNESS:	Nominal 17/64" (6.8 mm) overall
WEIGHT:	3.79 lb / ft ² (18.50 kg / m ²)
APPROX. VISIBLE TRANSMISSION:	77%
FIRE RATING:	45 minutes

Detail based on use of Fireframes Designer Series narrow profile framing

Glazing Thickness:	17/64" nominal (6.8 mm)
a. Frame width:	2" (51 mm)
b. Frame height:	2-3/4" (70 mm)
c. Stop height:	5/8" (typical) (15 mm)
d. Pocket width:	9/16 (14.3 mm)
e. Edge clearance:	1/4" (6.4 mm)
f. Bite:	1/2" (12.7 mm)



LABELING

Each piece of WireLite shall be permanently labeled with the WireLite logo, UL logo and fire rating.

INSTALLATION

WireLite shall be glazed into the appropriate fire-rated framing with an approved glazing compound (pure silicone, closed cell PVC tape, or DAP 33 putty) as supplied by the installer.

For sizes larger than 1,296 in² (.84 m²) or 54" (1.37 m) in one dimension (noted in the size schedule for standard sizes), WireLite shall be glazed with Pemko FG3000™ as supplied by the installer.

STORAGE & HANDLING

Inspect each piece of WireLite immediately before installation and eliminate any with observable edge damage or face imperfections. WireLite must be handled with care during transportation, storage, inspection and installation. Store in a dry place.

FAMILY OF PRODUCTS

TGP offers a complete family of products for all your fire-rated glazing needs, ranging from 20 minute to 3 hour applications. More information is available online at fireglass.com, or by calling 800.426.0279.

Fireglass®20

Fire-rated, impact safety-rated glass

FireLite®

Fire-rated glass ceramic

FireLite® NT

Fire-rated, impact safety-rated glass ceramic with surface-applied film

FireLite Plus®

Fire-rated, impact safety-rated glass ceramic

FireLite® IGU

Fire-rated or fire/impact safety-rated insulated glass units

Pilkington Pyrostop®

Fire-rated, impact safety-rated transparent wall panels

WireLite®

Fire-rated, wired glass

WireLite® NT

Fire-rated, impact safety-rated wired glass with surface-applied film

Fireframes®

Fire-rated framing & doors for use with all TGP glass products