

Fire-Rated Wood Doors & Frames

Fire Rating: 20/45 Minutes

Fireframes® Hardwood doors and frames are designed for maximum durability and fire-rated performance. The system offers an attractive alternative to traditional hollow metal steel frames and can incorporate a wide range of fire-rated glazing materials with glass sizes that surpass traditional systems.

FEATURES

- Fire ratings 20-45 minutes (45 min. with required hose stream test)
- Thick hardwood face for unmatched beauty and durability
- Available in a variety of species
- Available flat jamb and throated
- Compatible with most rated hardware
- Engineered core for dimensional stability
- 20 & 45 minute door jambs
- Designed for interior use

LISTINGS/STANDARDS

Classified and labeled by Underwriters Laboratories, Inc®. File numbers R19305 (doors), and R21551 (20 and 45 minute frames). Frame tests performed in accordance with:

UL 9	NFPA 252	CAN/ULC-S104	ASTM E119	LARR 25798
UL 10B	NFPA 257	CAN/ULC-S106		
UL 10C				



BIM 3D Model Available



UL Classified & Labeled



Fire-Rated



Hose Stream Tested



Positive Pressure Tested

FRAMING

	RATING	MAX. EXPOSED GLASS AREA PER PIECE	MAX. EXPOSED GLASS DIMENSION	OPENINGS WITH DOORS	45 MINUTE OPENINGS WITHOUT DOORS	MINIMUM WALL THICKNESS
Sidelites* & Borrowed Lites	45 min.	4394.25 in ² (2.84 m ²)	46.5" (W) x 94.5" (H) 1.81 m (W) x 2.40 m (H)	Maximum Width = 12' 6" (3.81 m) Maximum Height (including transom) = 10' 11"-7/8" (3.35 m)	Maximum Width = 12' 7"-1/2" (3.84 m) Maximum Height = 10' 1" (3.07 m)	3-3/4" (.095 m)
Transom	45 min.	1339.5 in ² (.86 m ²)	70.5" (W) x 19" (H) 1.79 m (W) x .48 m (H)			

DOORS

RATING	MAX. SINGLE DOOR LEAF SIZE	MAX. EXPOSED GLASS SIZE PER PIECE	MAX. EXPOSED SINGLE DIMENSION
20 min. (Full Lite)	48" x 108" (1.21 m x 2.74 m)	2,868 in ² (1.85 m ²)	34-3/4" (W) 87-9/16" (H) .88 m (W) x 2.48 m (H)
45 min. (Full Lite)	36" x 96" (.91 m x 2.43 m)	1,714 in ² (1.11 m ²)	18-3/4" (W) 78-3/4" (H) .48 m (W) x 2.00 m (H)
45 min. (Partial Lite)	36" x 108" (.91 m x 2.74 m)	1,296 in ² (.84 m ²)	54" (1.37 m)
60 min. (Partial Lite)	36" x 96" (.91 m x 2.43 m)	1,296 in ² (.84 m ²)**	54" (1.37 m)
90 min. (Partial Lite)	36" x 96" (.91 m x 2.43 m)	1,296 in ² (.84 m ²)**	54" (1.37 m)

Note: Individual lite sizes cannot exceed "Max. Exposed Glass Area" shown.

*Maximum Hardwood Series doorframe rating is 45-minutes.

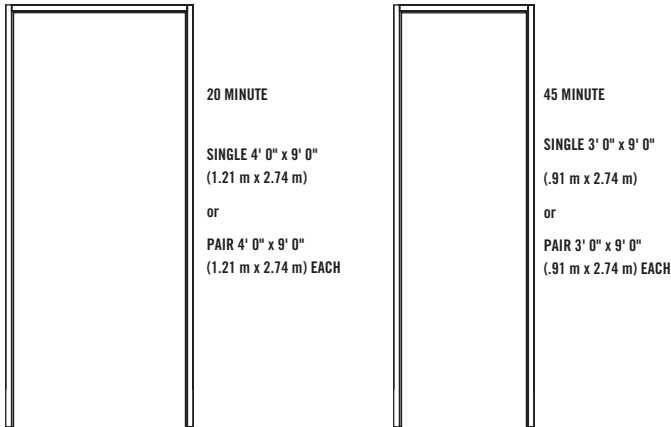
**Temp. rise at 100 sq. in. (.065 m²) max.

SPECIFICATIONS

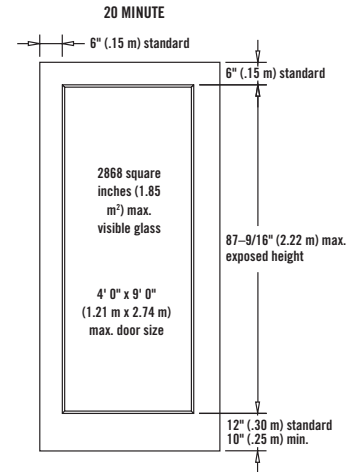
Complete 3-part CSI format specifications are available online at fireglass.com, or by calling 800.426.0279.

As interpretation of building and fire codes may vary depending on locale, please consult your local authorities for the proper use of Fireframes Hardwood Series.

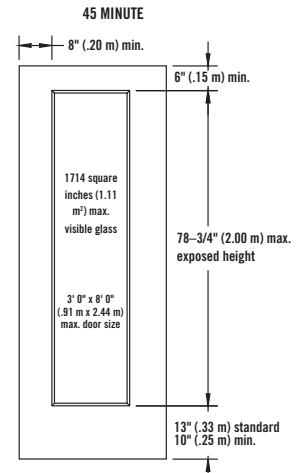
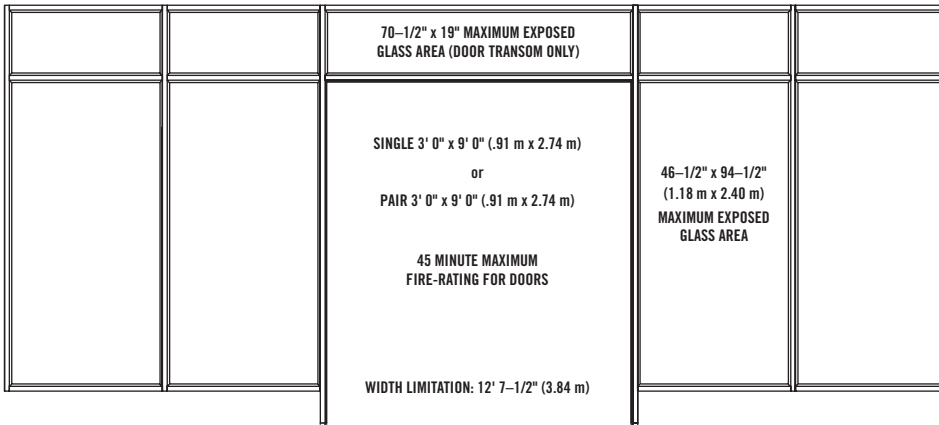
DOOR JAMBS: 20/45 MINUTE



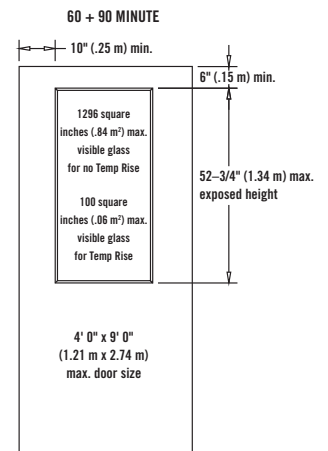
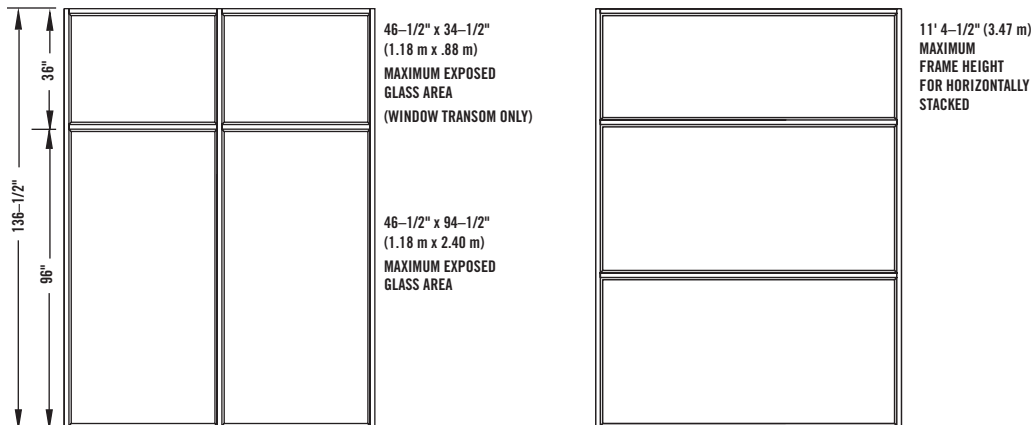
STANDARD DOOR ELEVATIONS



DOOR JAMB ASSEMBLIES: 20/45 MINUTE

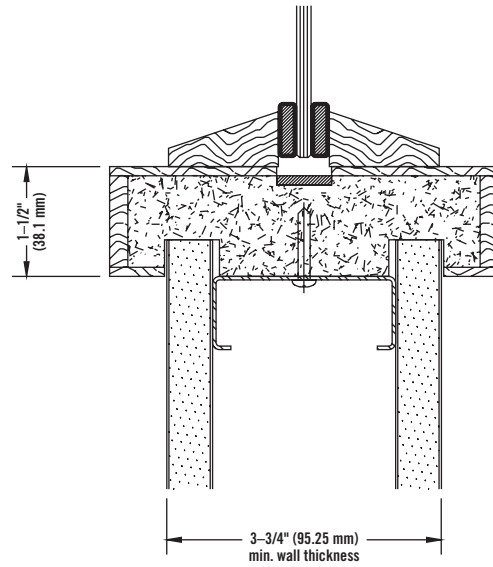
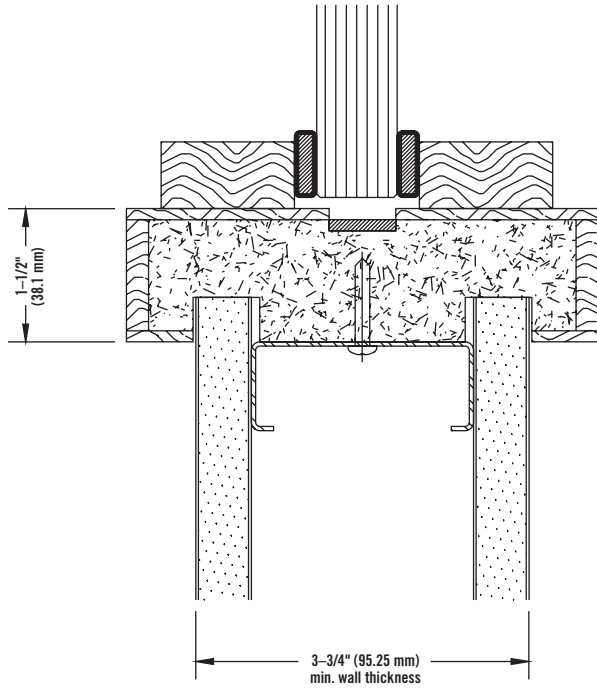


WINDOW ASSEMBLIES: 45 MINUTE



HARDWOOD ELEVATIONS & DETAILS

THROATED



FLAT JAMB

