

## Fire-Rated Steel Curtain Wall for Hurricane Applications

### Fire Rating: 60/120 Minutes

Designed for Hurricane applications (maximum design loads up to +/-110 psf)--highest wind load of any fire-rated curtain wall on the market, Fireframes® Curtainwall Hurricane Series incorporates precise European engineering resulting in narrow steel profiles.

#### FEATURES

- Fire ratings of 60 and 120 minutes with required hose stream test
- Maximum design load up to ± 110 psf
- Narrow steel profiles
- Air and water pressure tested and approved for exterior use
- Easy installation similar to typical pressure plate curtain wall
- Frames supplied “K-D” (knock down) ready for installation or welded depending on application
- Insulated glass unit (IGU) comprised of large panes of Pilkington Pyrostop® fire-resistive-rated glass and HVHZ glass (high velocity hurricane zone for large missile).
- Pilkington Pyrostop fire-resistive-rated glass is composed of Pilkington OptiWhite™ glass and clear intumescent interlayers
- 60 minute Pilkington Pyrostop is also available with a translucent interlayer
- Durable steel frames ensure low maintenance system
- Finished face caps (aluminum or stainless steel) to meet project needs
- Custom aluminum face caps to meet project needs
- Finish painted at the factory to match desired color scheme

#### LISTINGS/STANDARDS

Classified and labeled by Underwriters Laboratories Inc. and Underwriters Laboratories of Canada. File number R38707, design number U537 (W473 Canada). Florida State Product approval # FL 24474.1. Frame tests performed in accordance with:

UL 9	NFPA 251	CAN/ULC-S101	ASTM E119	LARR 25798	AAMA 501.1	TAS 201
UL 263	NFPA 257	CAN 4 S-106	ASTM E283		AAMA 506	TAS 202
			ASTM E330			TAS 203
			ASTM E331			
			ASTM E1996			
			ASTM E1886			

#### FRAMING

RATING	MAX. EXPOSED GLASS AREA PER PIECE	MAX. EXPOSED GLASS DIMENSION
60 min.*	5,604 in <sup>2</sup> (3.62 m <sup>2</sup> )	96 in (2.44 m)
120 min.*	3,730 in <sup>2</sup> (2.41 m <sup>2</sup> )	96 in (2.44 m)

\* 60 and 120-minute tests conducted per UL 263 / ASTM E-119. Therefore assembly is classified as a wall assembly, and not subject to “opening” area limitations.

**Note:** Individual lite sizes cannot exceed “Max. Exposed Area” shown above.



BIM 3D Model Available



UL Classified & Labeled



Fire-Rated



Hose Stream Tested



Heat Barrier

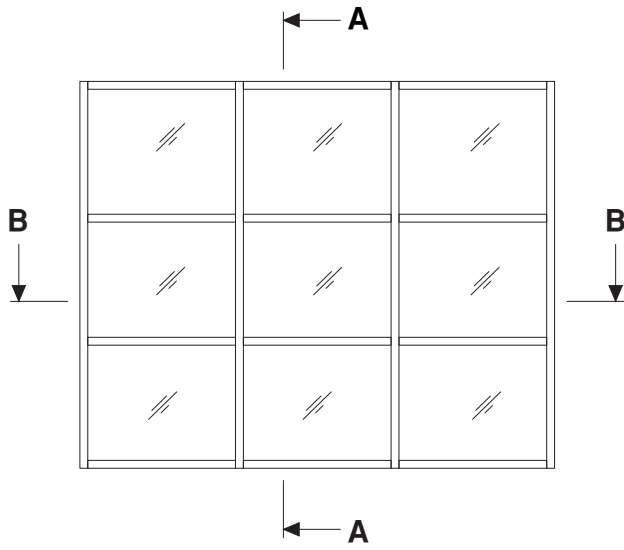


Positive Pressure Tested

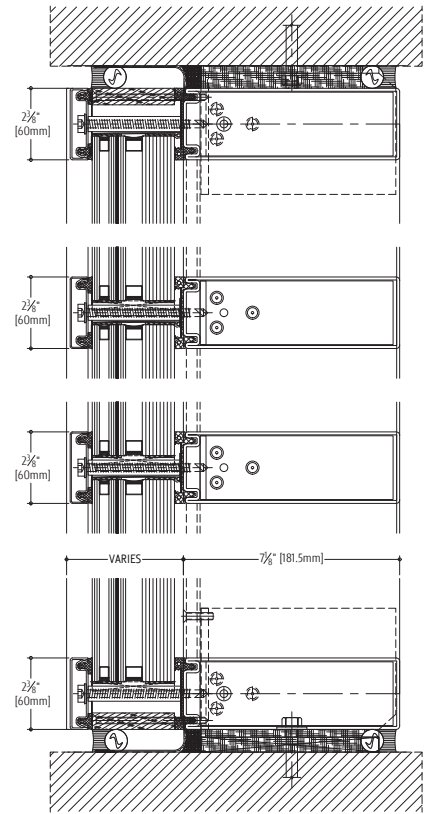


Hurricane Rated

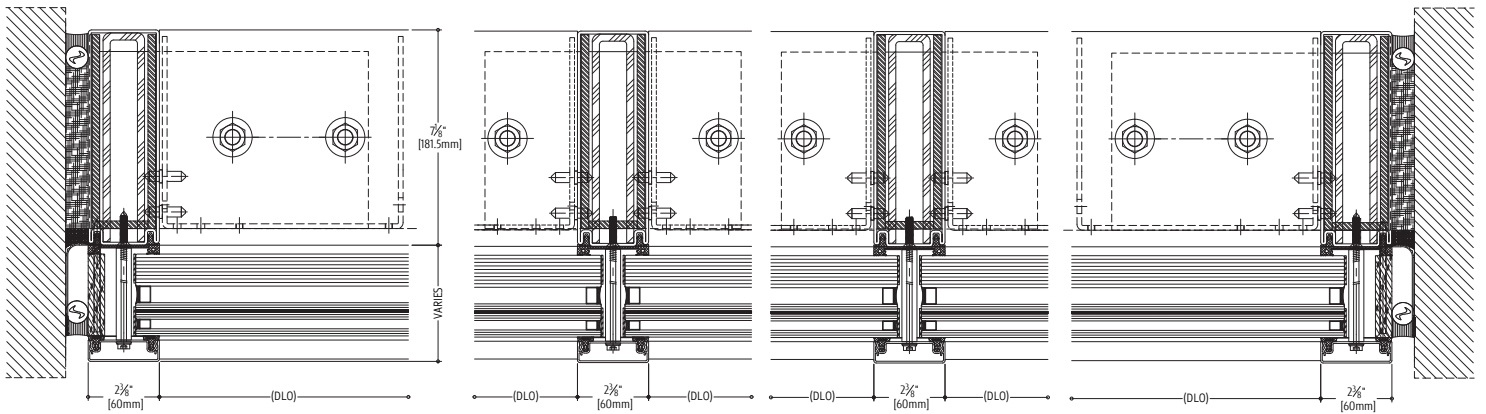
**DETAIL DRAWINGS**



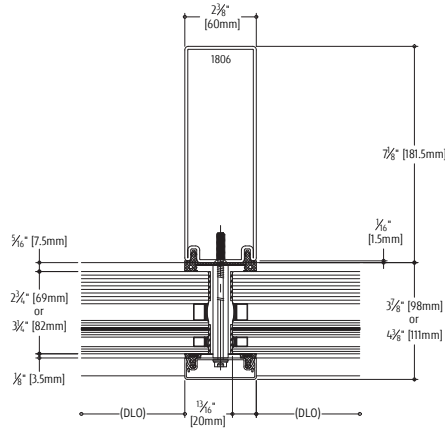
**A-A**



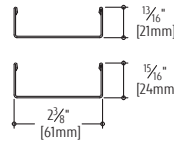
**B-B**



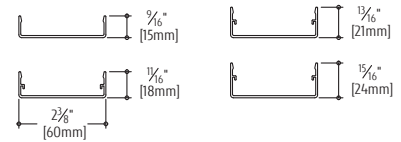
## 60 MM MULLION PROFILE OPTIONS



STAINLESS STEEL COVER CAPS



ALUMINUM COVER CAPS



## PILKINGTON PYROSTOP® FOR FIREFRAMES® CURTAINWALL HURRICANE SERIES

FIRE-RATING	MANUFACTURER'S DESIGNATION	NOMINAL THICKNESS	WEIGHT APPROX.	MAKE-UP
60	60-260 HR Triple	2-3/4" (69 mm)	22.22 lb / ft <sup>2</sup> (108.5 kg / m <sup>2</sup> )	6 mm (1/4") tempered glass 8 mm spacer 14 mm hurricane impact laminated glass interlayer 14 mm spacer 27 mm PS 60-201 (also available with a translucent interlayer)
60	60-360 HR Triple	2-3/4" (69 mm)	22.22 lb / ft <sup>2</sup> (108.5 kg / m <sup>2</sup> )	6 mm (1/4") tempered glass (coated) 8 mm spacer 14 mm hurricane impact laminated glass interlayer 14 mm spacer 27 mm PS 60-201 (also available with a translucent interlayer)
120	120-260 HR Triple	3-1/4" (82 mm)	27.96 lb / ft <sup>2</sup> (136.50 kg / m <sup>2</sup> )	6 mm (1/4") tempered glass 8 mm spacer 14 mm hurricane impact laminated glass interlayer 14 mm spacer 40 mm PS 120-202
120	120-360 HR Triple	3-1/4" (82 mm)	27.96 lb / ft <sup>2</sup> (136.50 kg / m <sup>2</sup> )	6 mm (1/4") tempered glass (coated) 8 mm spacer 14 mm hurricane impact laminated glass interlayer 14 mm spacer 40 mm PS 120-202