

Fire-Rated, Butt-Glazed, Safety-Rated Transparent Wall Panels

Fire Rating: 60/120 Minutes

Fireframes ClearView® System is comprised of butt-glazed Fireglass®, low-iron fire-rated and impact safety-rated glass with a heat resistive perimeter frame. TGP's butt-glazed joints feature nearly colorless transitions between adjoining pieces of the low-iron glass, eliminating the need for colored internal glass unit spacers or vertical frame mullions. The perimeter of each butt-glazed elevation is held in place by the designer's choice of TGP's narrow profile Fireframes® fire-rated frames.

FEATURES

- Fire-ratings for up to 60 and 120 minutes with required hose stream test
- Protection against radiant and conductive heat transfer
- Barrier to fire and smoke
- Impact safety-rated – meets CPSC 16CFR1201 (Cat. II)
- Designed for use in interior applications
- Virtually uninterrupted views and light transmission
- Narrow 5 mm vertical butt joint
- Incorporates large individual panes of Fireglass fire-resistive-rated glass composed of Pilkington Optiwhite™ glass and clear intumescent interlayers (multi-laminate, not a sensitive polymer gel)

LISTINGS/STANDARDS

Classified and labeled with Underwriters Laboratories, Inc.® and Underwriters Laboratories of Canada. File number is dependent on perimeter frame selection. Fireframes Heat Barrier Series design number U533 (W474 Canada), Fireframes Aluminum Series design number U558 (U416 Canada), and L-Angle U531 (W476 Canada). Tests performed in accordance with:

UL 263 | NFPA 251 | CAN/ULC-S101 | ASTM E119



BIM 3D Model Available



UL Classified & Labeled



Fire-Rated



Hose Stream Tested



Impact-Rated



Heat Barrier



Positive Pressure Tested

FIREGLASS PRODUCT DATA

FIRE-RATING	MANUFACTURER'S DESIGNATION	NOMINAL THICKNESS	WEIGHT APPROX.	U-VALUE	DAYLIGHT TRANS. APPROX. (%)	STC RATING APPROX. (%)	MAX. EXPOSED AREA	MAX. WIDTH OF EXPOSED GLAZING	MAX. HEIGHT OF GLAZING	MIN. WIDTH OF EXPOSED GLAZING
60	60-201	27 mm	12.5 lb / ft ² (61 kg / m ²)	.83	86	44	7,442 in ² (4.80 m ²)	63" (1.6 m)	118-1/8" (3.0 m)	31-9/16" (.80 m)
120	120-108	47mm	21.9 lb / ft ² (107 kg / m ²)	.67	81	46	7,442 in ² (4.80 m ²)	63" (1.6 m)	118-1/8" (3.0 m)	39-3/8" (1.0 m)

FRAME OPTIONS

Fireframes ClearView System is available with a variety of perimeter frames including Fireframes® Heat Barrier Series (rated for 60 & 120 minutes), Fireframes Aluminum Series (rated for 60 minutes) and L-angle steel by others (rated for 60 & 120 minutes). Please see Fireframes Heat Barrier Series and Fireframes Aluminum Series fact sheets for more detail.

LABELING

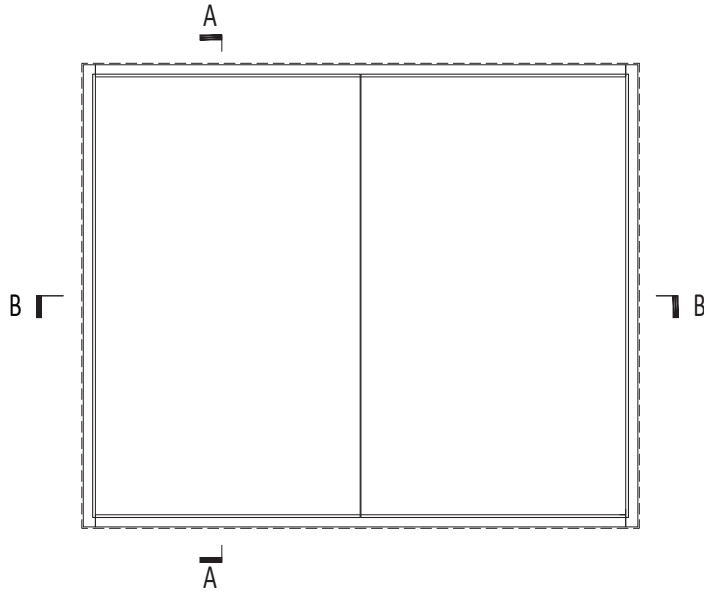
Each piece of Fireglass shall be permanently labeled with the Fireglass logo, UL logo and fire rating.

STORAGE & HANDLING

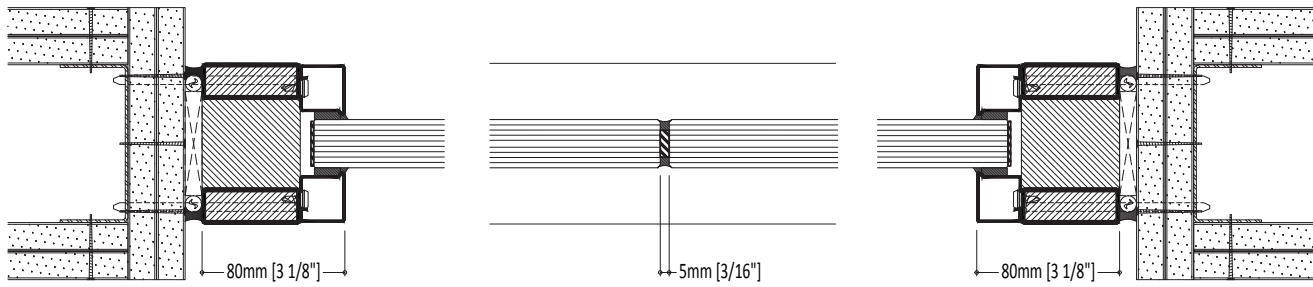
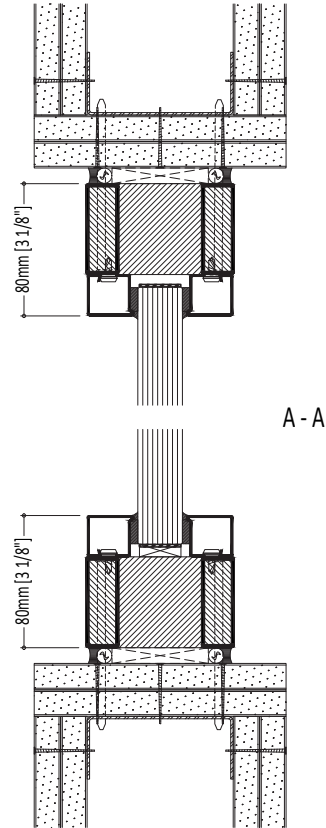
Fireglass must be handled with care during transportation, storage, inspection and installation. It should be stored in dry conditions, stocked vertically and fully supported in a manner which prevents the glass from sagging. During storage and transportation, the temperature of Fireglass should not exceed 122°F (50°C). Do not expose the "non-PVB" side of the glass to UV light. Do not remove the protective edge tape. See manufacturer's installation and warranty information for further details.

DETAIL DRAWINGS

Details shown use Fireframes Heat Barrier Series 60-minute frames by TGP.



ELEVATION VIEW



B - B

