



20/45 MINUTE FIRE-RATED DOORS & FRAMES

Nothing compares to the warmth and beauty of genuine wood. Now, thanks to the new Fireframes® Hardwood Series, you can incorporate wood doors and framing into your fire-rated openings. Designed for maximum durability and performance, the Hardwood Series offers an attractive alternative to traditional hollow metal steel frames. Available with fire ratings from 20 to 45 minutes, this system can incorporate a wide range of fire-rated glazing materials with glass sizes that surpass traditional systems.

FEATURES

- Fabricated in the U.S.A.
- Thick hardwood face for unmatched beauty and durability
- Available in a variety of species
- Available flat jamb and throated
- Add glazing from TGP for complete system
- Compatible with most rated hardware
- Engineered core for dimensional stability
- 20 & 45 minute door jambs
- Interior use only

LISTINGS

Classified and labeled by Underwriters Laboratories, Inc®. File numbers for labeled 20 minute door and 45 minute fire-rated frame assemblies are R19305 (doors), and R21551 (20 and 45 minute frames). Frame tests performed in accordance with CAN/ULC-S101, ASTM E-165, CAN 4-S106, NFPA 257, and UL 9. Door tests performed in accordance with CAN 4-S104, NFPA 252, UL 10B and UL 10C. Approved for use in Los Angeles: LARR 25798.

FRAMING			
	RATING	MAX. EXPOSED GLASS AREA	MAX. EXPOSED GLASS DIMENSIONS
Sidelites* & Borrowed Lites	45 Min.	4394.25 in ² (2.84 m ²)	46.5" (W) x 94.5" (H) 1.81 m (W) x 2.40 m (H)
Transom	45 Min.	1339.5 in ² (.86 m ²)	70.5" (W) x 19" (H) 1.79 m (W) x .48 m (H)

OPENINGS WITH DOORS

Maximum Width = 12' 6" (3.81 m)
Maximum Height
(including transom) = 10' 11"-7/8"
(3.35 m)

45 MINUTE OPENINGS WITHOUT DOORS

Maximum Width = 12' 7"-1/2" (3.84 m)
Maximum Height = 10' 1" (3.07 m)

MINIMUM WALL THICKNESS

3-3/4" (.095 m)

DOORS (General Guidelines)			
RATING	MAX. SINGLE DOOR LEAF SIZE	MAX. EXPOSED GLASS AREA PER PIECE	MAX. EXPOSED SINGLE DIMENSION
20 min. (Full Lite)	48" x 108" (1.21 m x 2.74 m)	2,868 in ² (1.85 m ²)	34-3/4" (W) 87-9/16" (H) .88 m (W) x 2.48 m (H)
45 min. (Full Lite)	36" x 96" (.91 m x 2.43 m)	1,714 in ² (1.11 m ²)	18-3/4" (W) 78-3/4" (H) .48 m (W) x 2.00 m (H)
45 min. (Partial Lite)	36" x 108" (.91 m x 2.74 m)	1,296 in ² (.84 m ²)	54" (1.37 m)
60 min. (Partial Lite)	36" x 96" (.91 m x 2.43 m)	1,296 in ² (.84 m ²)**	54" (1.37 m)
90 min. (Partial Lite)	36" x 96" (.91 m x 2.43 m)	1,296 in ² (.84 m ²)**	54" (1.37 m)

Note: Individual lite sizes cannot exceed "Max. Exposed Glass Area" shown.

*Maximum Hardwood Series doorframe rating is 45-minutes.

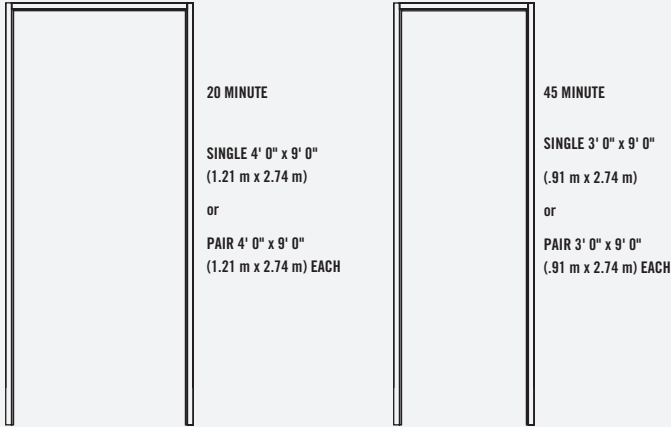
**Temp. rise at 100 sq. in. (.065 m²) max.

SPECIFICATIONS

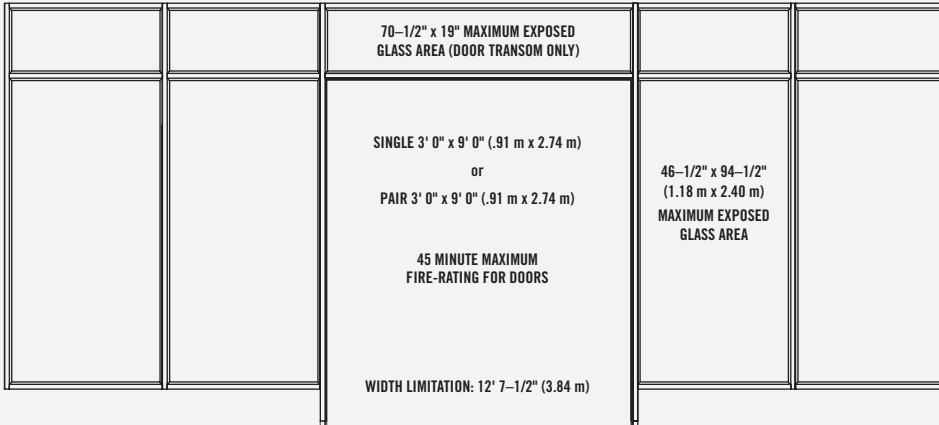
Complete 3-part CSI format specifications are available online at fireglass.com, or by calling 800.426.0279.

As interpretation of building and fire codes may vary depending on locale, please consult your local authorities for the proper use of Fireframes Hardwood Series.

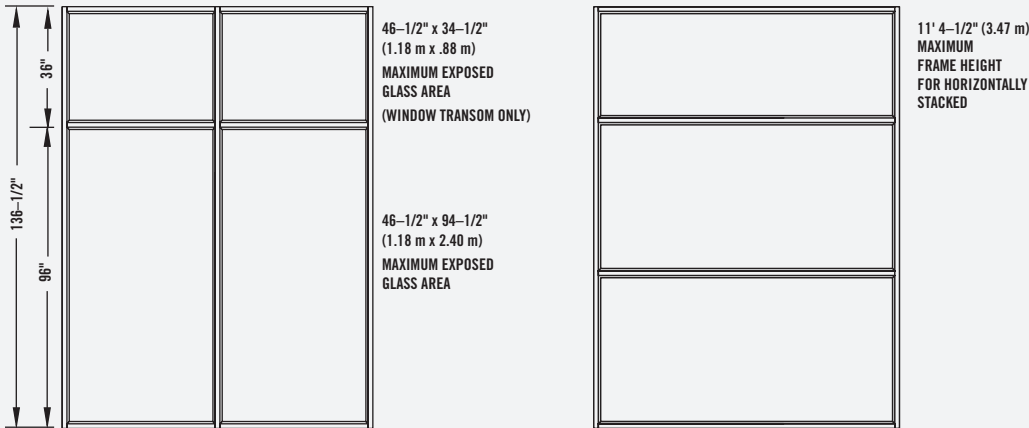
DOOR JAMBS: 20/45 MINUTE



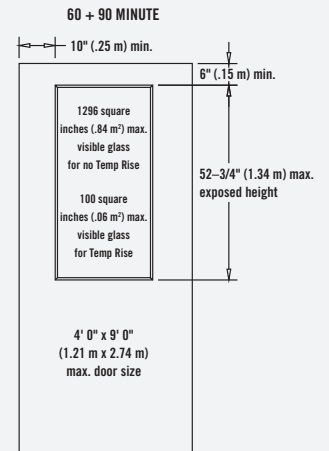
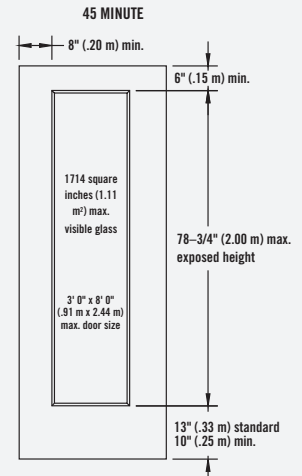
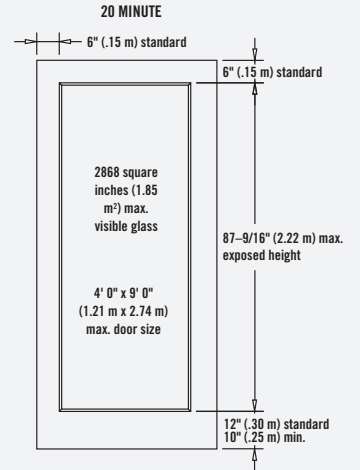
DOOR JAMB ASSEMBLIES: 20/45 MINUTE



WINDOW ASSEMBLIES: 45 MINUTE

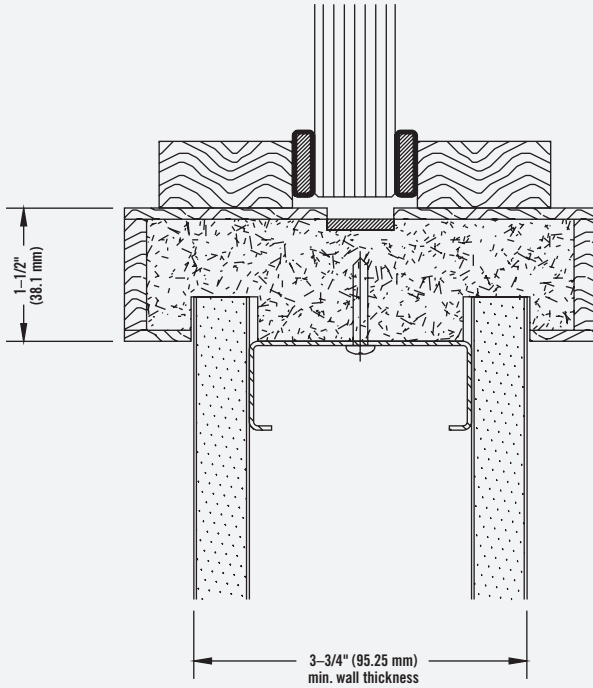


STANDARD DOOR ELEVATIONS



HARDWOOD ELEVATIONS & DETAILS

THROATED



FLAT JAMB

