



20/45/60/90 MINUTE FIRE-RATED DOORS & FRAMES

The Fireframes® Designer Series doors and frames incorporate precise European engineering to provide a sleek, modern alternative to traditional steel hollow metal frames. The Designer Series system possesses narrow steel profiles, thereby exceeding traditional fire-rated frame systems in aesthetics and performance. Available with fire ratings from 20 to 90 minutes, this system can incorporate a wide range of fire-rated glazing materials with glass sizes that surpass traditional systems.

FEATURES

- Easy installation similar to typical storefront systems
- Narrow steel profiles
- Doors available in single leaf or double leaf design
- Full vision fire doors
- Durable welded steel construction of doors
- Modular system that can incorporate 20/45/60/90 minute Designer Series doors
- Can be used with wired glass, Fireglass®20, Pilkington Pyrostop®, or the FireLite® family of products
- Passes positive pressure test standards UL 10C
- Frames supplied welded or “K-D,” ready for installation
- Hardware available to fit functional requirements. Please check with TGP for compatibility
- Finish powder coating at the factory to match desired color scheme
- Fabricated in the U.S.A.
- Arched profiles
- Brushed stainless steel finish available for fire ratings up to 45 minutes

Note: This product is not intended for use in locations requiring a barrier to radiant heat, as it does not meet test standards ASTM E-119 or UL 263. If your jurisdiction requires “barrier to heat” framing, please contact Technical Glass Products regarding Fireframes® Heat Barrier Series.

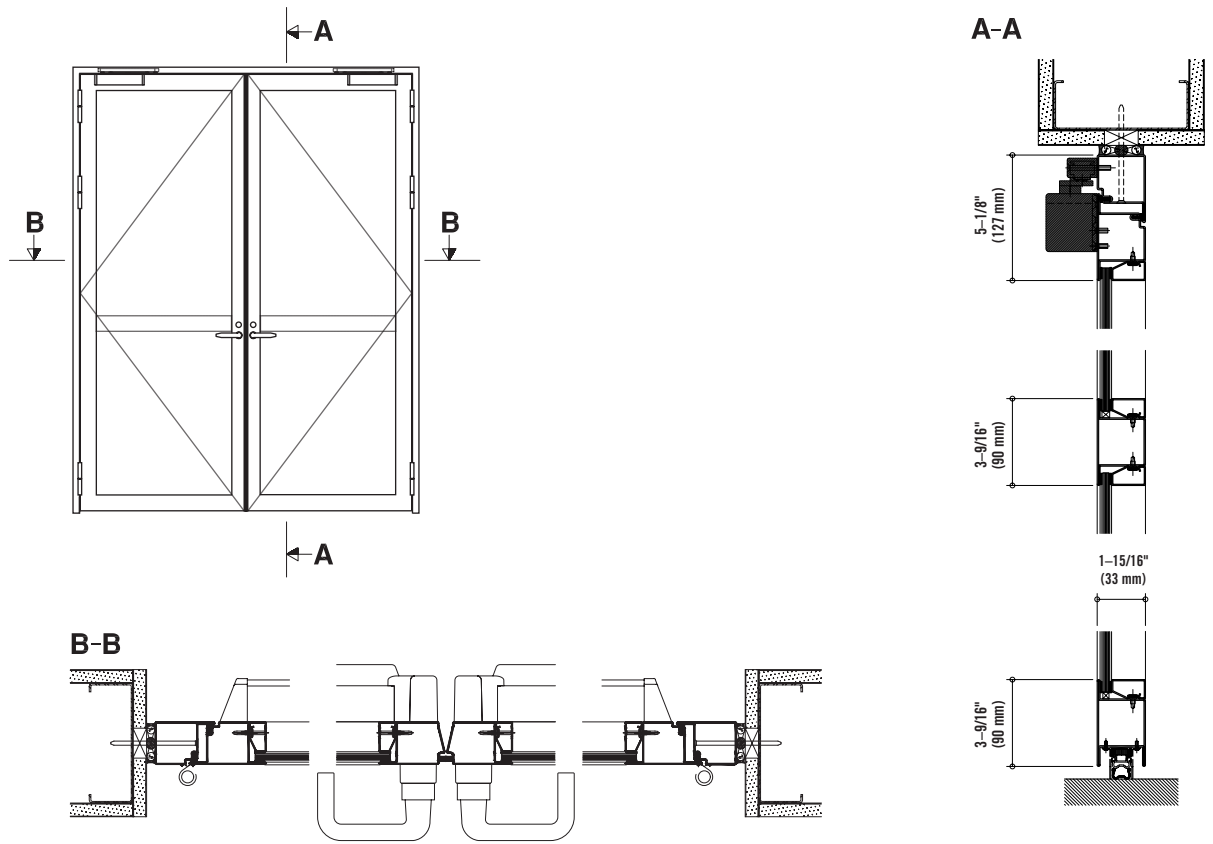
LISTINGS

Classified and labeled by Underwriters Laboratories Inc.® and Underwriters Laboratories of Canada. File number for labeled 20/45/60/90 minute fire-rated frame assemblies is R-19207. Frame tests performed in accordance with UL 9 and NFPA 257. Door tests performed in accordance with UL 10B, UL 10C, NFPA 80 and NFPA 252. Approved for use in New York City: MEA 426-04-M. Approved for use in Los Angeles: LARR 25798.

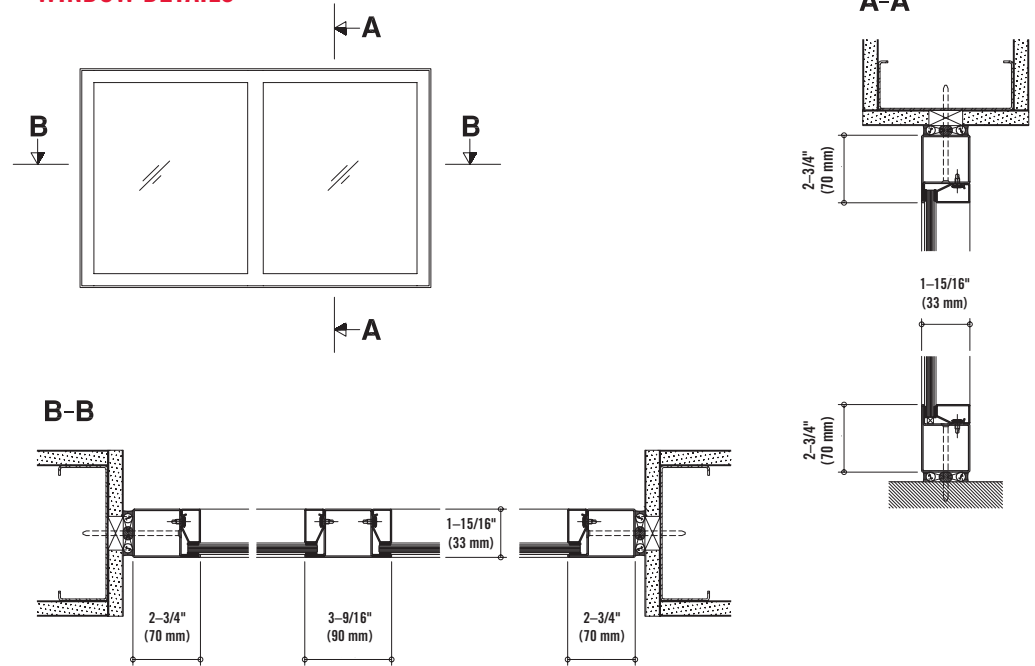
FRAMING			DOORS		
RATING	MAX. EXPOSED GLASS AREA PER PIECE	MAX. EXPOSED GLASS DIMENSION	RATING	MAX. SINGLE DOOR LEAF SIZE	MAX. EXPOSED GLASS SIZE PER PIECE
20 min.	6,272 in ² (4.05 m ²)	106–1/2 in (2.71 m)	20 min.	42 x 96 in (1.07 m x 2.43 m)	36 x 89 in (.91 m x 2.26 m)
45 min.	4,500 in ² (2.90 m ²)	95–1/4 in (2.42 m)	45 min.	42 x 96 in (1.07 m x 2.43 m)	36 x 89 in (.91 m x 2.26 m)
60 min.	5,616 in ² (3.62 m ²)	96 in (2.44 m)	60 min.	42 x 96 in (1.07 m x 2.43 m)	36 x 89 in (.91 m x 2.26 m)
90 min.	2,627 in ² (1.69 m ²)	56–1/2 in (1.44 m)	90 min.	43 x 95–7/8 in (1.09 m x 2.44 m)	36 x 56–1/2 (divided lite door) in (.91 m x 1.44 m)

Note: Individual lite sizes cannot exceed “Max. Exposed Glass Area” shown above.

DOOR DETAILS



WINDOW DETAILS



ALL DOOR HARDWARE FOR DESIGNER SERIES DOORS IS SUPPLIED BY TECHNICAL GLASS PRODUCTS.

Please contact TGP regarding your individual hardware requirements.

STANDARD HARDWARE MAY INCLUDE:

- Hinges
- Surface mounted or concealed closers
- Single mortise lock
- Panic hardware
- Tall bottom rails