



IMPACT-RATED



FIRE-RATED



LOAD BEARING



HEAT BARRIER



FIRE-RATED, SAFETY-RATED GLASS FLOORING SYSTEMS

This advanced glass floor system is impact-resistant and fire-rated for two hours – the only glazed floor in North America with that level of protection. Fireframes ClearFloor can be used as a durable, non-slip walking surface, and is approved for loads up to 150 psf. Listed by Underwriters Laboratories (UL), the system is available for both interior and exterior applications.

FEATURES

- Fire-rated for up to two hours
- Allows glazing in spaces that previously would have required alternative opaque fire-stopping materials like concrete and corrugated steel
- Consists of two-hour fire-rated Pilkington Pyrostop® glass; a tempered, laminated walking surface glass; and a steel framing grid
- Brings daylight deep into building interiors, creating dramatic visual effects between different building levels
- Individual glass panel sizes are approximately 48" x 50"
- Protection against radiant and conductive heat transfer
- Barrier to fire and smoke
- Durable, non-slip walking surface
- Modular system enables design creativity
- Replacement of individual walking surface panels in case of impact breakage
- Allows for decorative color frits and sandblasted glass without affecting fire rating
- For use in interior and/or exterior applications

LISTINGS

Listed with Underwriters Laboratories, Inc.® File number is BXUV.C901. Tests performed in accordance with ASTM E-119, CAN/ULC-S101, UL 263 and NFPA 251. Approved for use in Los Angeles: LARR 25798.

SPECIFICATIONS

Complete 3-part CSI format specifications are available online at fireglass.com, or by calling 800.426.0279.

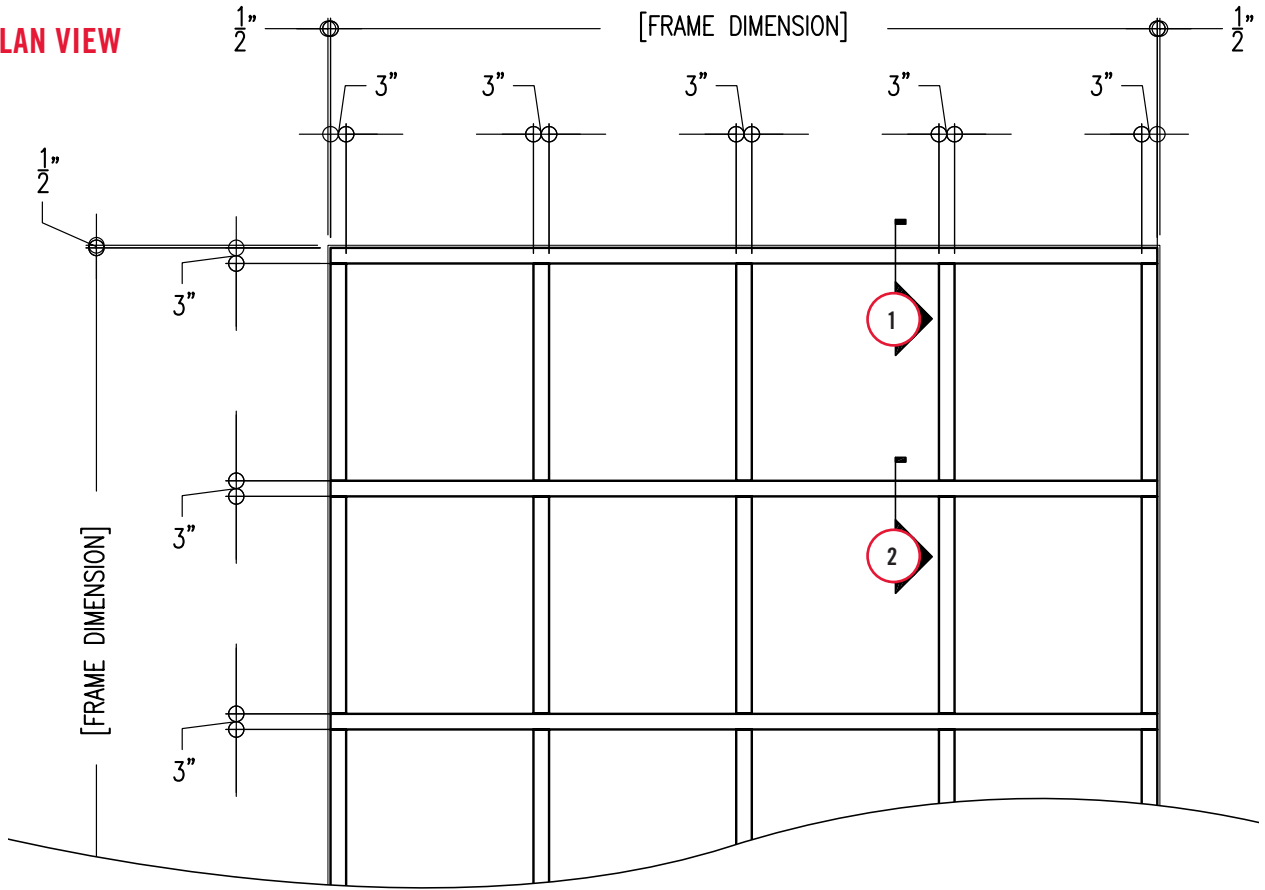
STORAGE & HANDLING

Pilkington Pyrostop must be handled with care during transportation, storage, inspection and installation. It should be stored in dry conditions, stocked vertically and fully supported in a manner which prevents the glass from sagging. During storage and transportation, the temperature of Pilkington Pyrostop should not exceed 122°F. Do not expose the "non-PVB" side of the glass to UV light. Do not remove the protective edge tape. See manufacturer's installation and warranty information for further details.

FAMILY OF PRODUCTS

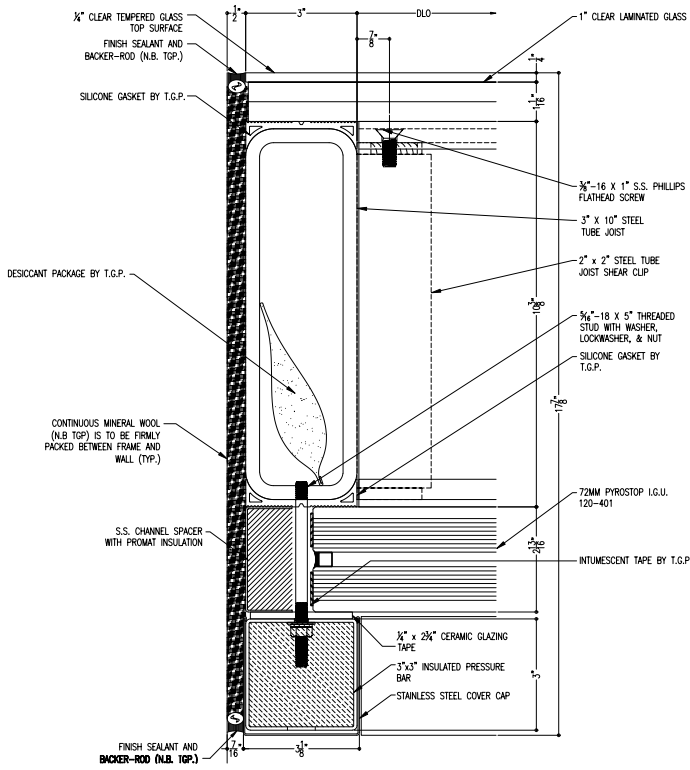
TGP offers a complete family of products for all your fire-rated glazing needs, ranging from 20 minute to 3 hour applications. More information is available online at fireglass.com, or by calling 800.426.0279.

PLAN VIEW



MAXIMUM INDIVIDUAL GLASS PANEL SIZE APPROXIMATELY 48" X 50"

1 CROSS SECTION AT EDGE CONDITION



2 SHORT JOIST CROSS SECTION

